

# GALAXY



Photo credit: SEDS Messier Catalogue – M51

# PLANETARY NEBULA



Photo credit: SEDS Messier Catalogue – M27

# **GLOBULAR CLUSTER**



**Photo credit: SEDS Messier Catalogue – M13**

# OPENCLUSTER

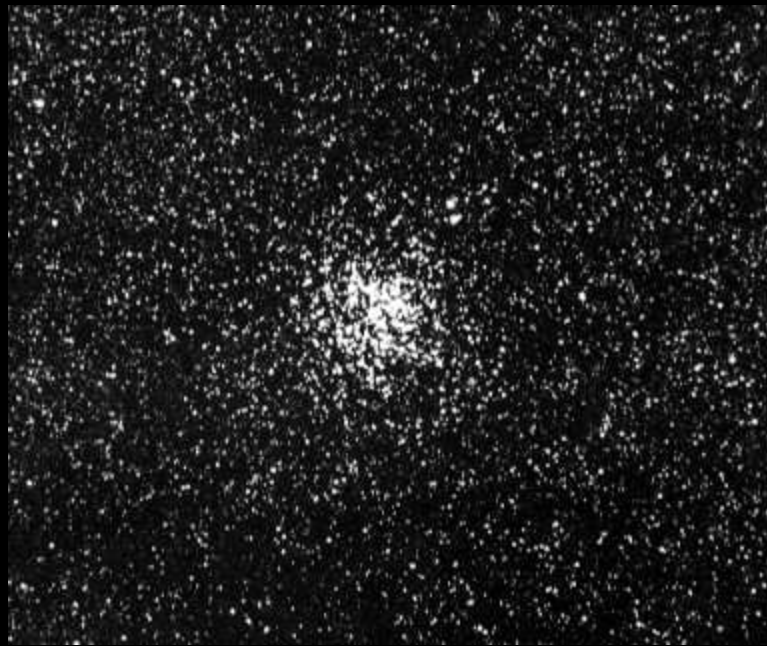
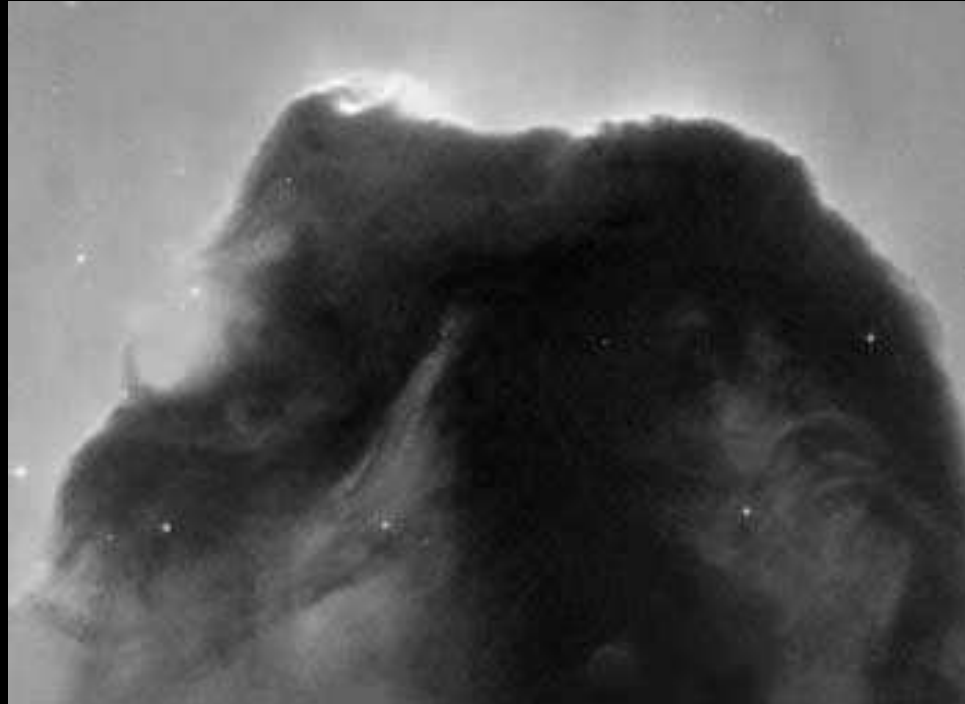


Photo credit: SEDS Messier Catalogue – M11

# **DARKCLOUD**



**Photo credit: Hubble Space Telescope – B33**

# DOUBLESTAR

NPOI Observations of Mizar A  
( $\zeta^1$  Ursa Majoris)

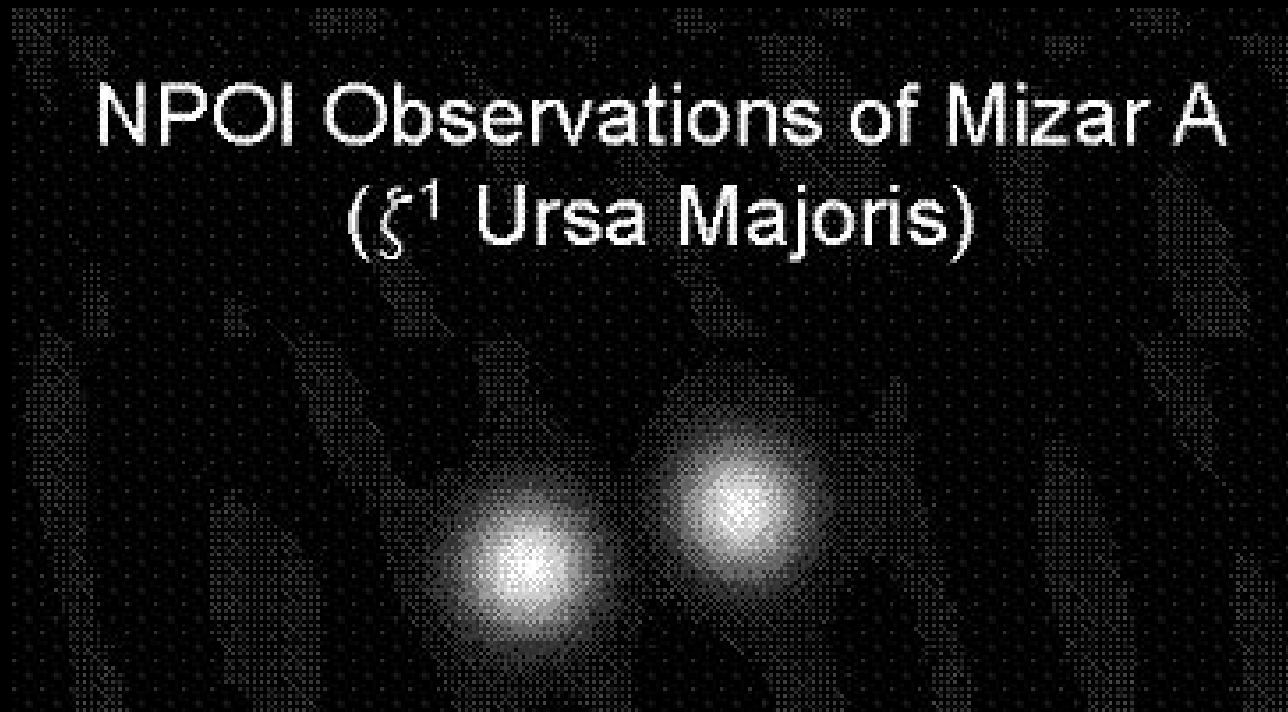


Photo credit: NOPI –Mizar A and Mizar B

# MULTI-STAR SYSTEM

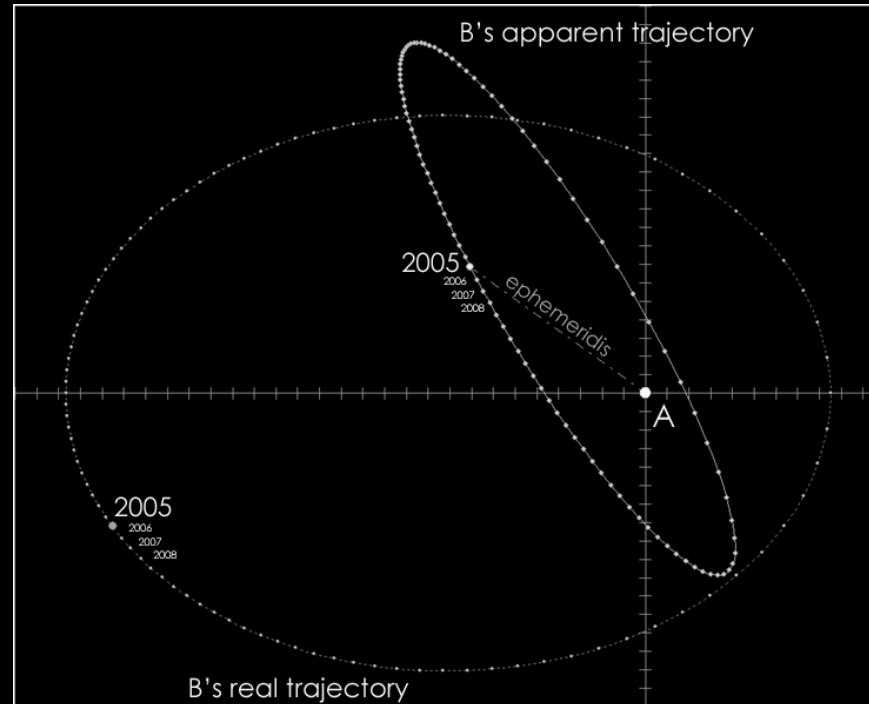


Photo credit: Wikipedia – Triple alpha Centauri orbit diagram

# BRIGHT STAR – SPECTRA

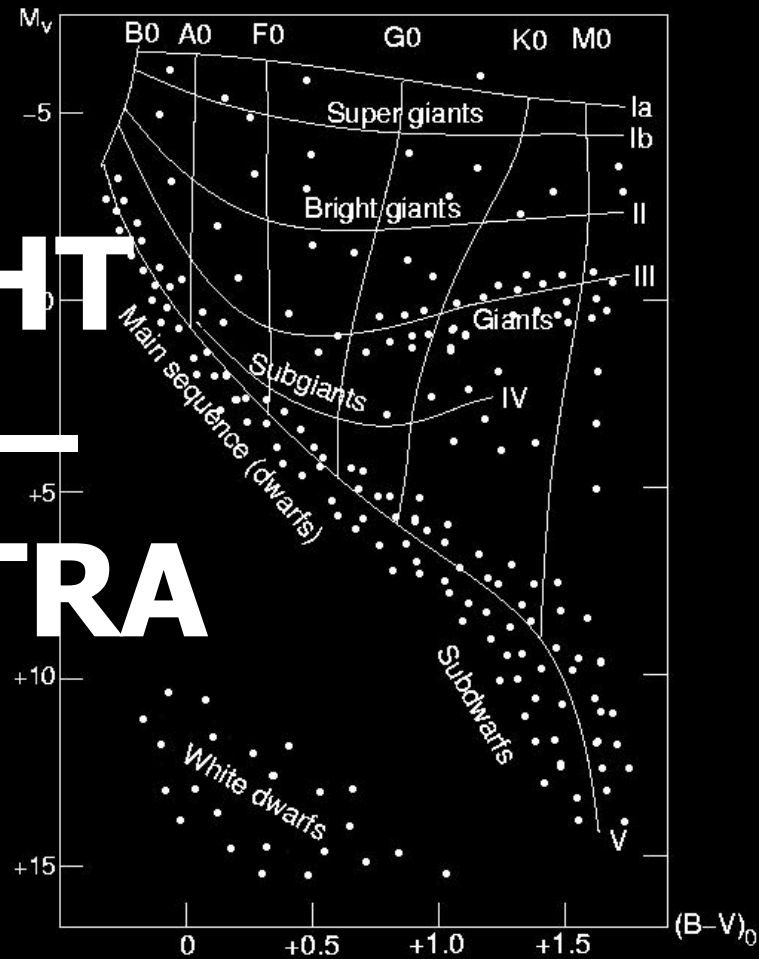


Photo credit: Wikipedia – HR Diagram

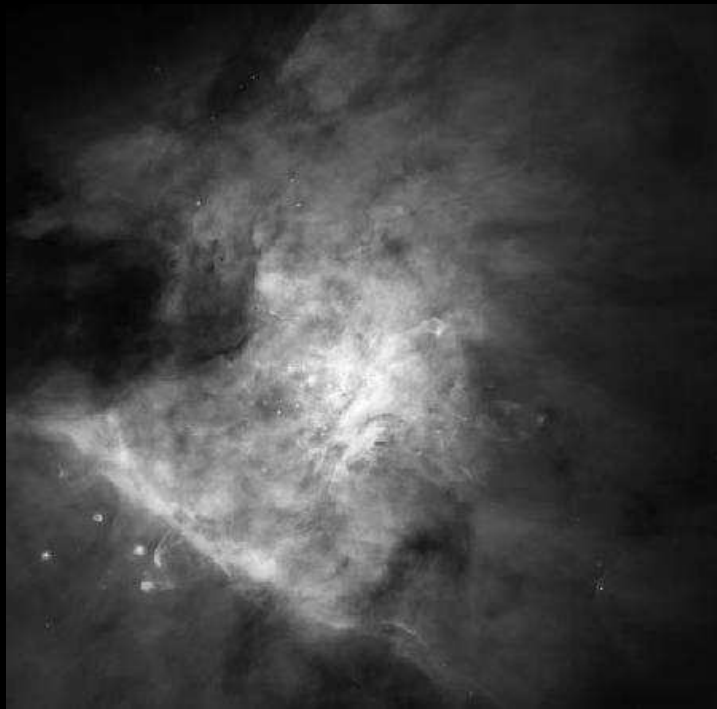


# REFLECTION NEBULA



Photo credit: SEDS Messier Catalogue – M78

# EMISSION NEBULA



M42

# DIFFUSE NEBULA



Photo credit: SEDS Messier Catalogue – M8

# PLANET

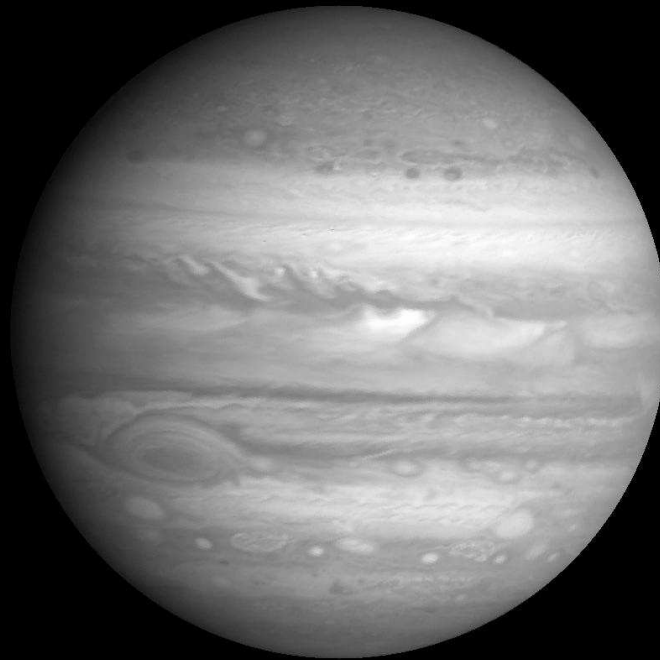


Photo credit: NASA - Jupiter

# VARIABLESTAR



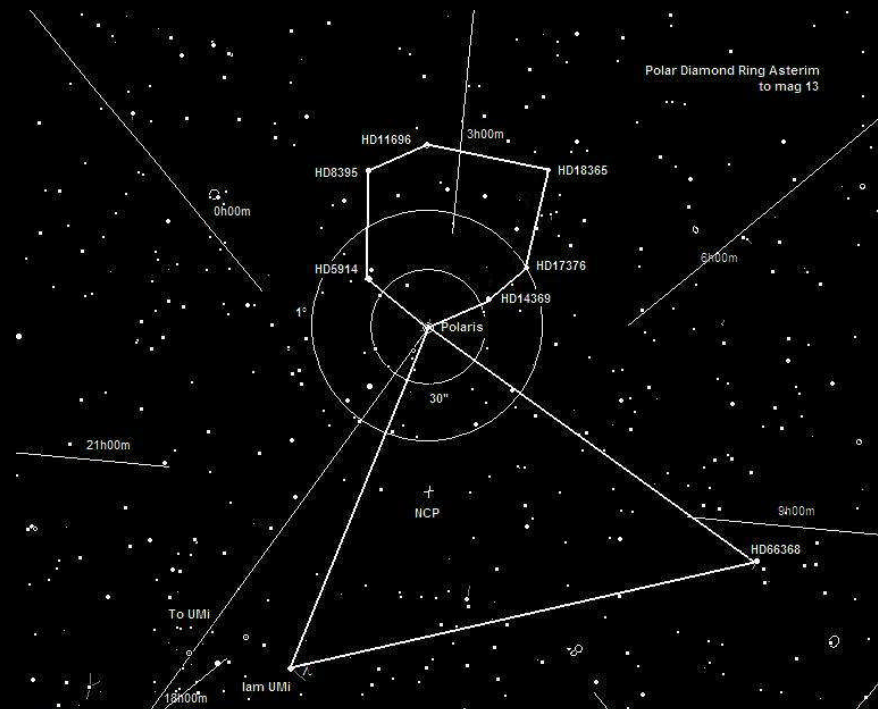
Photo credit: NASA/Chandra – Mira A and Mira B in X-Ray

# **SUPERNOVA REMNANT**



**Photo credit: SEDS Messier Catalogue – M1**

# ASTERISM



**Diamond Ring asterism around Polaris and North Celestial Pole**

# APETURE COMPARISON

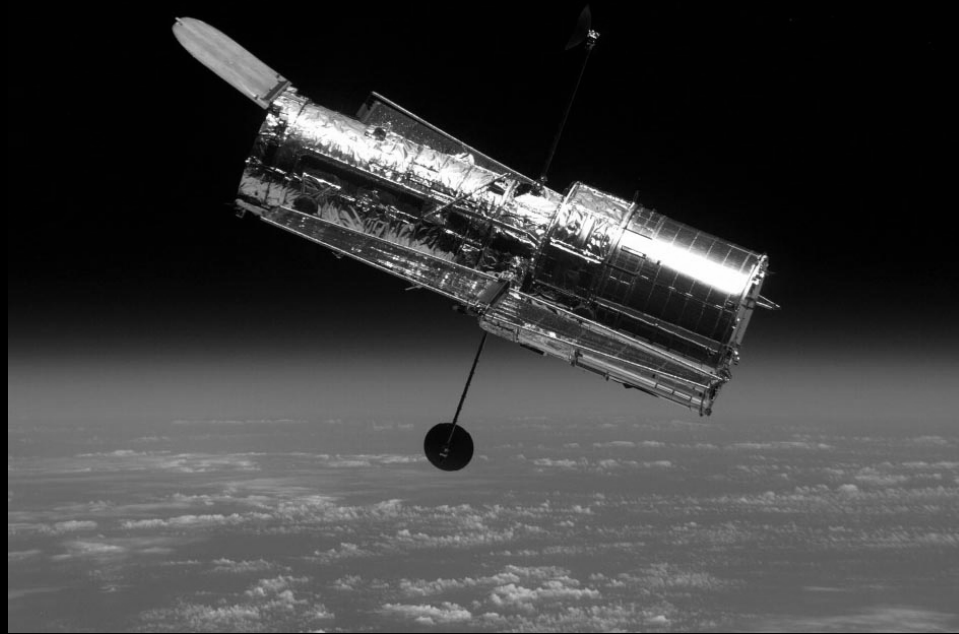


Photo credit: NASA. STS82 view of Hubble



# MAGNIFICATION COMPARISON

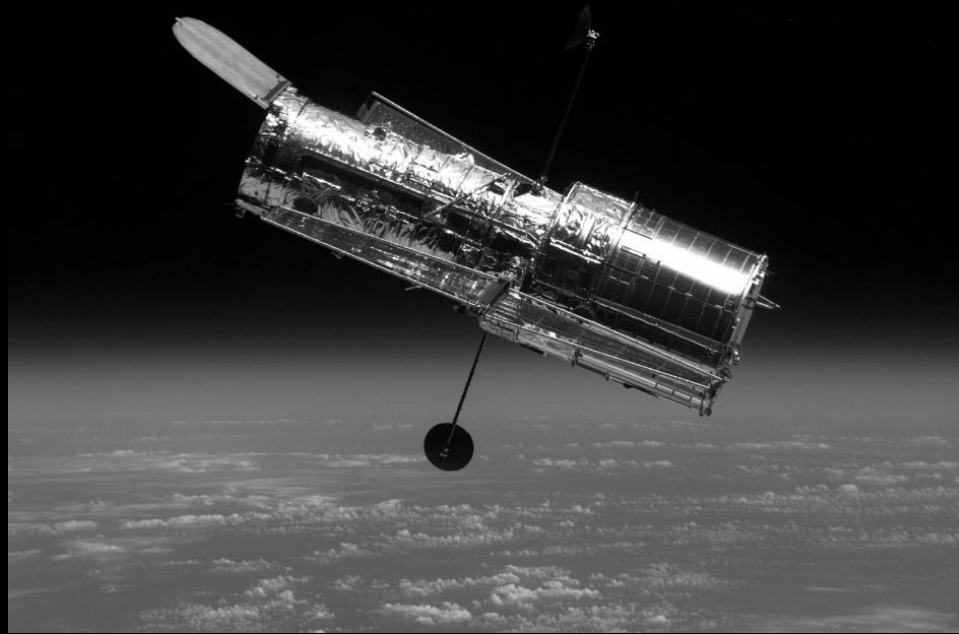


Photo credit: NASA. STS82 view of Hubble

# **SINGLE OBJECT NGC1234**

**J2000:**

**Size:**

**Type:**

**Distance:**



**Key feature:**